

HASP Dongle Driver Installation



1. Installation of the HASP Device Driver

1.1 Downloading the driver from the website.

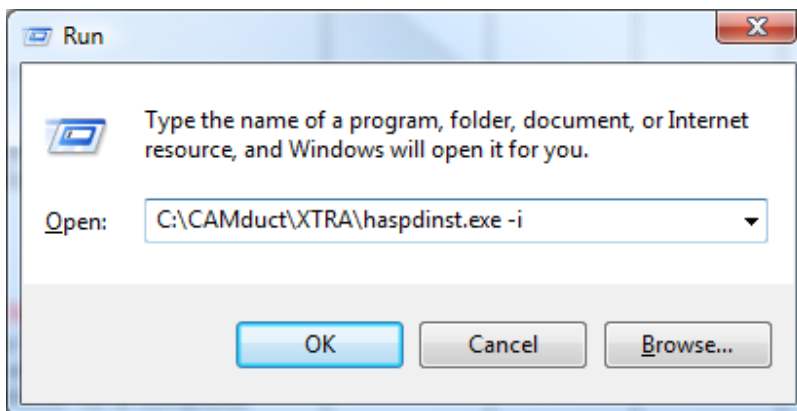
Step by Step

- Download the latest Device Driver from the website and save the file to your local computer (This could be your Desktop).
- Extract the files from the contained zip file (haspdinst.exe and readme.txt) to your installation directory. (For example: CAMduct/XTRA/*, ESTduct/XTRA/* or CADduct/*)
- Click to confirm overwriting of the previously installed driver files.

1.2 Installation Process

Step by Step

- Go to Start > Run
- Click Browse and navigate to the copied haspdinst.exe file that has been previously downloaded.
- Select the file and click Open.
- We now need to enter a “space -i” to the end of the path to perform the HASP device driver installation as shown below:



- Click OK to confirm the installation. The program should now be ready to run.

