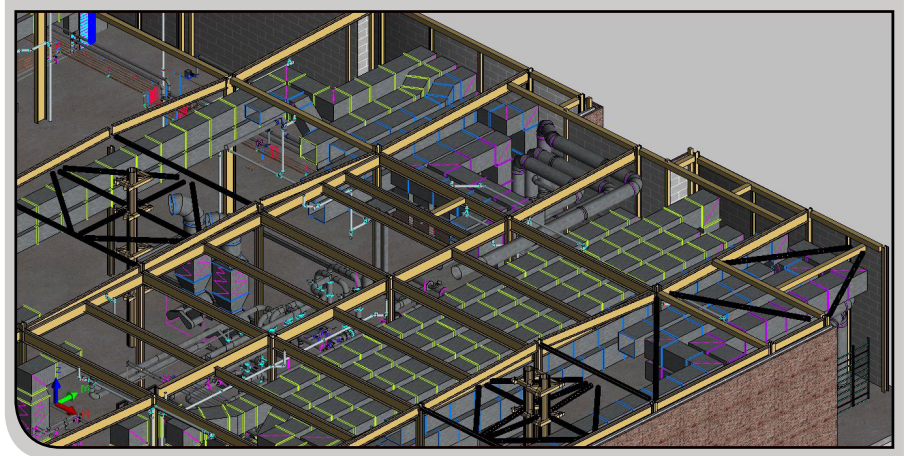


ORBITOR VALIDATOR

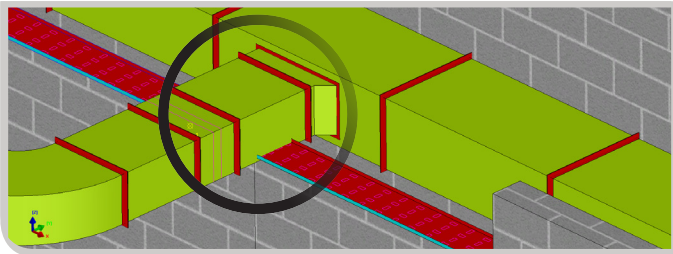
Review and Co-ordinate Project Models in One Application

Large 3D models are created from various platforms in any building design phase. When these models are combined to create one common 'master model', cost implications can be incurred from resulting slow downs and incompatibilities.

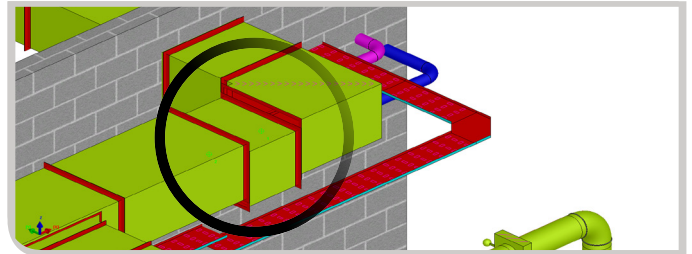
Orbitor Validator incorporates all the features necessary to efficiently review and co-ordinate project models in one application, allowing evaluation of possible collisions, duplicates, open ends, continuity, connectivity and integrity - a standard prerequisite for analysis, procurement & manufacturing.



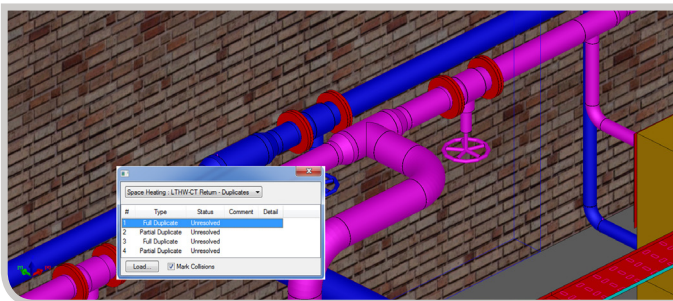
Co-ordinated 'master model' view of various 3D platforms.



Example of Collision Detection between services. Electrical Containment is colliding with HVAC services and this is highlighted by Orbitor Validator.



Example of Open End. HVAC service in not correctly aligned and this is highlighted by Orbitor Validator.



Example of Duplicates. Orbitor Validator highlights duplicate parts in this service.

Designed to utilise models from various CAD packages, Orbitor Validator's unique conversion process allows efficient application integration

A SELECTION OF THE UNIQUE FEATURES...

- **E-Links:** all models can be 'electronically linked' into a reference model. As amendments are made and saved on any individual level, the updates are reflected in real-time within MAP Software packages so that a user is sure they are always working with the correct model.
- **Checking:** in-depth and extensive checking tools, which are unparalleled in their class, mean reduce costs and re-coordination times prior to manufacture and site installation. No other checking software provides this level of checking.
- **Rendering and Walkthrough:** the 3D rendering tools and walkthrough functionality enable incredible detail to be brought to the model for better investigation and providing clients with realistic project visualisation.

"E-LINK" INDIVIDUAL MODELS

Architectural Layout

Groundwork Layout

Steelwork Layout

Co-ordinated Services Layout



map
building **green**software solutions

HELPING YOU REDUCE COSTS...SUSTAINABLY

The newest intuitive at MAP Software is to go the extra mile in providing users with ways to maximise cost-savings while minimising their elusive carbon footprint.

Orbitor Validator provides this two-fold benefit by:

- **Minimising** power consumption through Orbitor Validator's unique processing methods. Large model data uses less memory and less computer power.
- **Reducing** labour intensiveness via decreases in re-coordination time.
- **Optimising** management processes by improving audit trails on project amendments.



HISTORY & EXPERIENCE

A proven track record with worldwide recommendations

MAP Software have over 25 years experience in developing HVAC & MEP software solutions. Our software is proven to be reliable, cost effective and designed in line with what our customers have told us they require. MAP have unrivalled global knowledge of manufacturing, estimating and CAD solutions for HVAC Ductwork & MEP industries. We invest heavily in very active R&D programs that are customer driven and tested.

How about some more information?

If you want to see **Database Output** in action, or talk to someone directly about the benefits the solution can provide for you, call us now on **+44 (0)1253 792 112** or email us on **info@map-software.com**



building
software
solutions

1-2 Metropolitan Business Park
Blackpool
FY3 9LT
United Kingdom
T: +44 (0)1253 792 112
F: +44 (0)1253 792 169
E: info@map-software.com

www.map-software.com