

# Job Import Tool

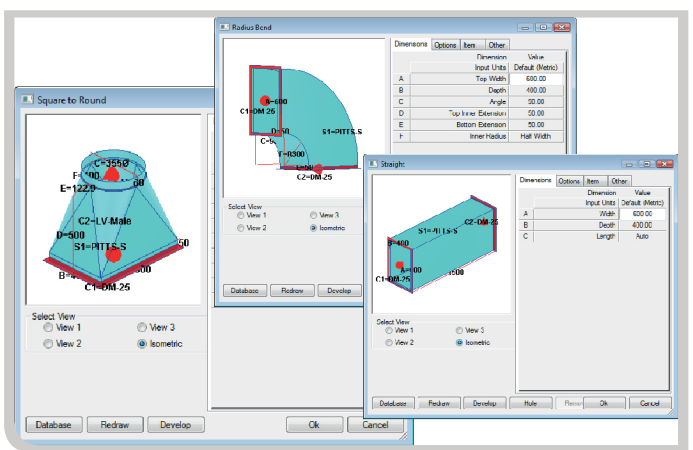
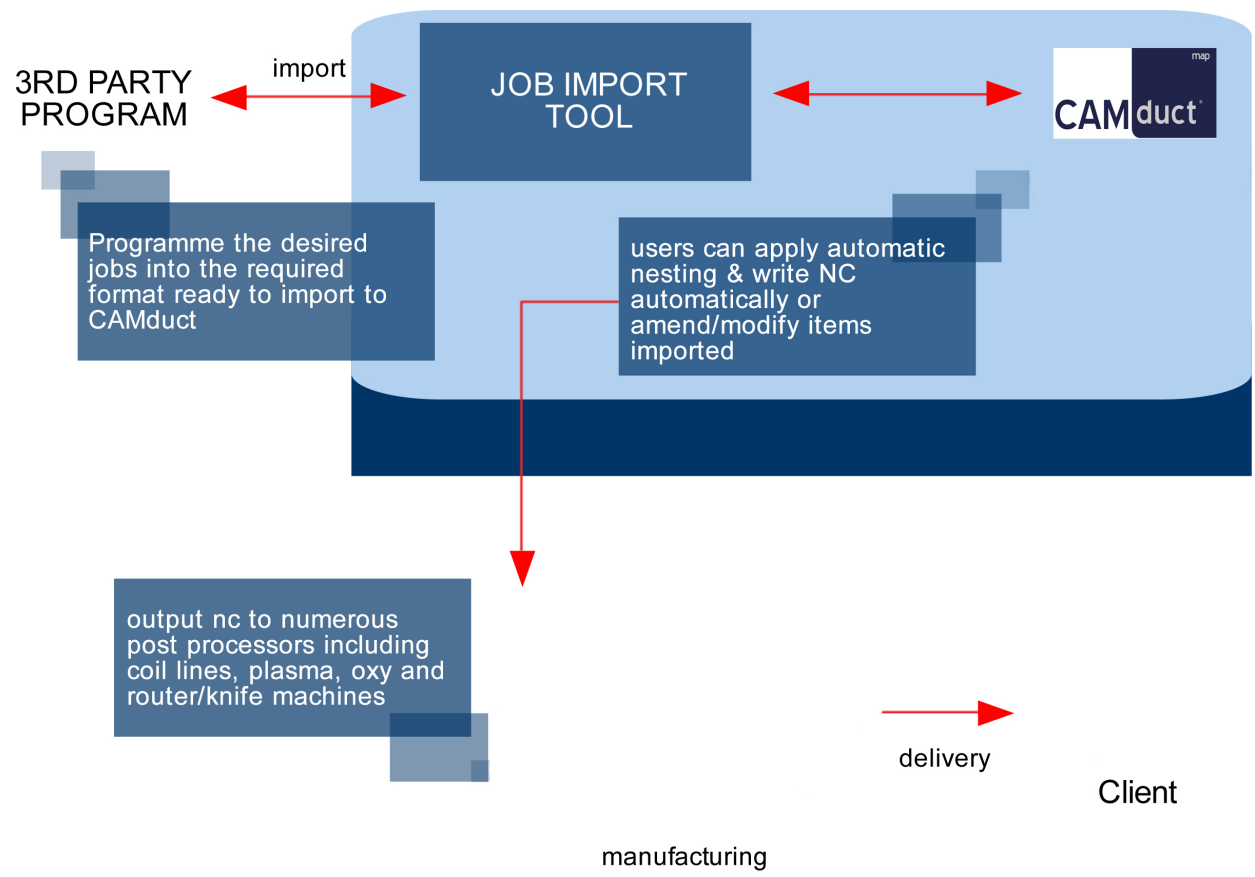
## Increase the productivity of 3rd party applications

**Job Import** provides users with the ability to create jobs using a text file format. The text file format is controlled via MAP Software and comes complete with a glossary of all the available functions in order to produce jobs for manufacturing.

**Job Import** is commonly used with 3rd Party systems such as Order Processing, where jobs are created in the necessary format automatically via programming, macros or scripting. This eliminates the use of manual entry into MAP's CAMduct software solution and allows preferences for specification, which can be used to dictate manufacturing standards such as Connectors, Seams, etc. to comply with DW144 and/or SMACNA.

JOB_START	MATERIAL	PATTERN_NUMBER
JOBHEADER_START	Galvanised	4
JOB_NAME	QUANTITY	ITEM_NUMBER
TestAscii	1	2
JOBHEADER_END	ITEMHEADER_END	SPEC
ITEM_START	DIMS_START	DW144-LV
ITEMHEADER_START	600	MATERIAL
PATTERN_NUMBER	400	Galvanised
866	1000000	QUANTITY
ITEM_NUMBER	DIMS_END	1
1		ITEMHEADER_END
SPEC	ITEM_END	DIMS_START
DW144-LV	ITEM_START	600

Sample ASCII code format required for import



The ASCII file breakdown translates into individual parts when imported

The CAMduct Program comprises Libraries of Ductwork Pattern Templates that can be called for via a unique pattern number through our **Job Import** tool. Item details such as Dimensions and Options can also be specified through the **Job Import** text file, allowing an automatic process of the items for manufacture.

**Job Import** is the ideal tool to help increase company productivity. The process can save hours in labour time from manual processing, enabling faster delivery to clients, higher job turnover, supporting greater operational output.