

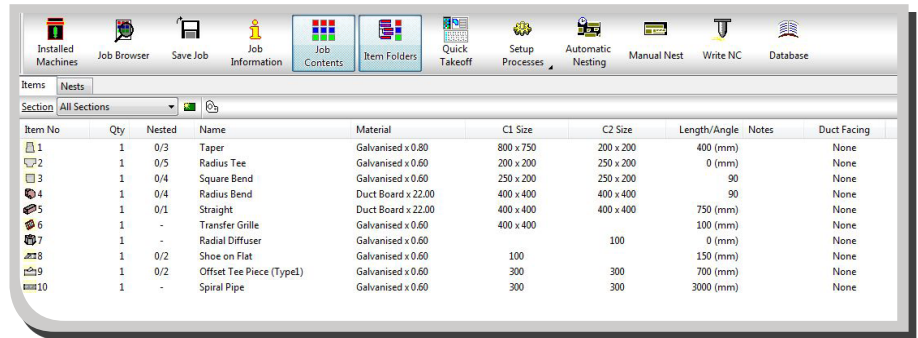
DATABASE OUTPUT

Export Job Manufacturing and Costing Information

Database Output gives the user the ability to transfer MAP Software's extensive range of Job Manufacturing and Costing Information from within the software to a wide range of 3rd party software packages.

Eliminate the problem of working through pages and pages of printed Costing Information by analysing all the data on screen in the program of your choice.

This powerful feature can provide all levels of staff with comprehensive Job data in one manageable file that can be manipulated into any layout or format to serve any need.



Job Contents in CAMduct

A standard print report from CAMduct. A user would need to manually import figures to generate data analysis for 3rd party systems

Manufactured Items	Weight - (Kgs)	No of Items	Material Cost	Manufacture Cost	Install Cost	Total
Rect Duct	12.39	5	8.67	41.14	25.51	£75.32
Round Duct	8.36	3	5.85	6.76	10.75	£23.37
Oval Duct						£0.00
Ductboard	4.02	2	28.96	14.95	5.55	£49.46
	24.77	10	43.48	62.85	41.81	

COST TOTAL £148.14

Database Output allows users to import information into 3rd party applications. Users can use detailed macro's enabled spreadsheets to create reports at the push of a button, or even import straight into a users own MRP or procurement system.

Pat Gp: Rectangular	Bought Out	Weight	Qty	Cost	F-Rate	E-Rate
No	2.75	1	1.92	11.83	7.13	
No	2.17	1	1.52	7.04	3.94	
Yes	0.00	1	0.00	0.00	2.88	
No	0.00	1	0.00	0.00	0.00	
	4.92	4	3.44	18.87	13.95	

Pat Gp: Rectangular/Fabrication	Bought Out	Weight	Qty	Cost	F-Rate	E-Rate
No	7.47	1	5.23	22.27	11.56	
	7.47	1	5.23	22.27	11.56	

Pat Gp: Rectangular/Ductboard	Bought Out	Weight	Qty	Cost	F-Rate	E-Rate
No	1.64	1	11.81	8.70	2.96	
No	2.38	1	17.15	6.25	2.59	
	4.02	2	28.96	14.95	5.55	

Grand Totals:	Weight	Qty	Cost	F-Rate	E-Rate
	16.41	7	37.63	56.09	31.06

Pat Gp: Round	Bought Out	Weight	Qty	Cost	F-Rate	E-Rate
No	0.43	1	0.30	3.96	2.42	
No	3.44	1	2.41	0.00	0.00	
No	4.50	1	3.15	2.80	8.33	
	8.36	3	5.85	6.76	10.75	

Use the simple "step by step" wizard to create fully customisable Export Formats

Users can create their own customisable Export Formats using a simple "step by step" wizard. These Export Formats can then be used to export the information contained within the current job for use in the propriety software of your choosing. A user can have as many Export Formats as they want, all tailored for different needs, therefore making it incredibly simple to create various reports instantly.

A SELECTION OF THE ADDITIONAL FEATURES...

EXAMPLES OF ACCESSIBLE INFORMATION

- Areas
- Weights
- Dimensional data
- Descriptions and materials
- Detailed price/cost data for analysis
- OEM supplier's ID code for purchasing
- Internal asset codes for Facilities Management
- Workshop and Site labour times for resource planning
- Job Totals for overall material usage for contract/period

- Batch Process:** allows the user to group a number of Jobs together and export the information for all Jobs into one manageable file. Say, for a given time period. Useful for analysis at the end of a Financial Year.
- Calculations** can be applied to the information before it is exported, saving time, effort and money in correlating the data within the software.
- The user can also apply **Filters, Merged Fields, Ordering and Sorting** before exportation.
- Save the file with a specific filename or automatically save with the original Drawing/Job name. Reduce time on your job control house-keeping by exporting the files directly into sub-folders of the original Job folder.



map
building **green**software solutions

HELPING YOU REDUCE COSTS...SUSTAINABLY

The newest intuitive at MAP Software is to go the extra mile in providing users with ways to maximise cost-savings while minimising their elusive carbon footprint.

The Database Output function provides this two-fold benefit by:

- **Minimising** time spent while maximising the resourcefulness of data analysis
- **Reducing** office storage space through minimal Job printing requirements
- **Limiting** administration time spent on producing the correct documents and re-finding them once they have been stored

Less printing = less paper = less deliveries = less carbon!



HISTORY & EXPERIENCE

A proven track record with worldwide recommendations

MAP Software have over 25 years experience in developing HVAC software solutions. Our software is proven to be reliable, cost effective and designed in line with what our customers have told us they require. MAP have unrivalled global knowledge of manufacturing, estimating and CAD solutions for HVAC Ductwork. We invest heavily in very active R&D programs that are customer driven and tested.

How about some more information?

If you want to see **Database Output** in action, or talk to someone directly about the benefits the solution can provide for you, call us now on **+44 (0)1253 792 112** or email us on **info@map-software.com**



building
software
solutions

1-2 Metropolitan Business Park
Blackpool
FY3 9LT
United Kingdom
T: +44 (0)1253 792 112
F: +44 (0)1253 792 169
E: information@map-software.

www.map-software.com